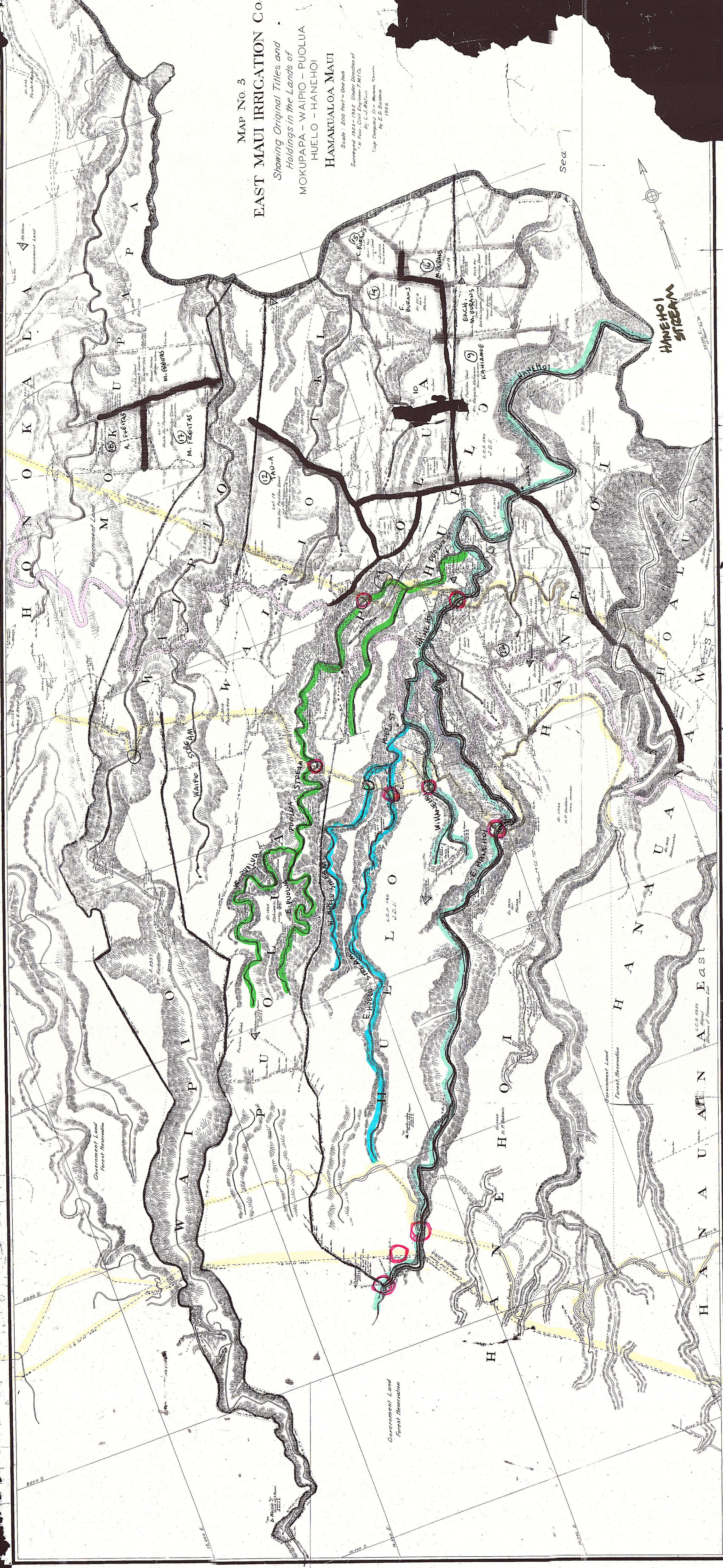


E-30-A



MAP No. 3
EAST MAUI IRRIGATION Co.
Showing Original Titles and Holdings in the Lands of
 MOKUPAPA - WAIPIO - PUOLUA
 HUELO - HANEHOI
 HAMA KUALOA MAUI

Scale: 200 feet = One Inch
 Surveyed 1923-1925 Under Direction of
 H. F. Foss, Civil Engineer, F. M. F. Co.
 Copied, Enlarged, & Revised
 By E. D. Bingham
 1926

LOWERS DITCH
 HANA HWY
 C. 1925
~~HALEIHO DITCH~~
 NEW HANIKO DITCH

E-30-A

E-30
106